

NORTH BEACH

WASHINGTON

NORTH BEACH

WASHINGTON





Keeping Cool and Comfortable in Midsummer

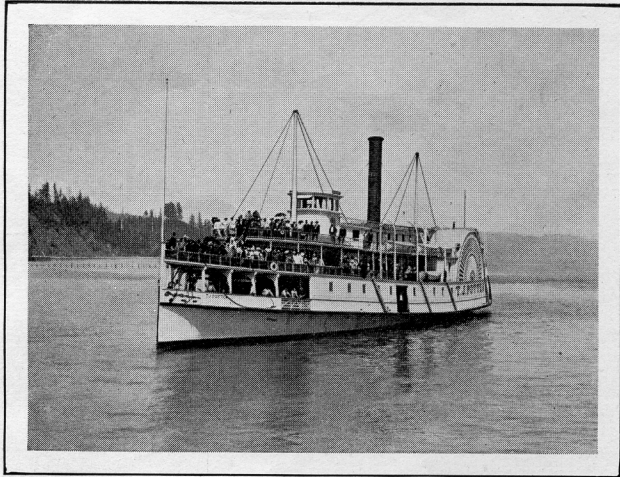


NORTH BEACH

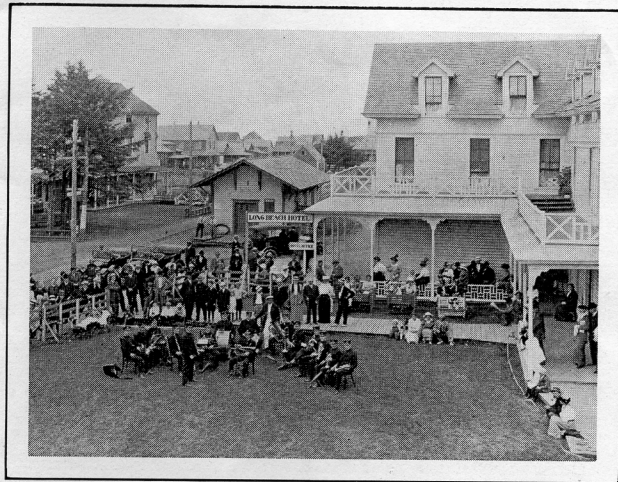
WHERE are you going to spend your summer vacation? If you have never spent a vacation at North Beach you have a treat in store. If in the past you have hesitated about packing bag and baggage and going to the coast on account of the hot and tiresome trip on the train, you need hesitate no longer, for your vacation will begin the moment you start for North Beach. By far the larger part of the benefit and pleasure of a summer vacation is getting out of the routine of existence and doing something different. The pleasure of your vacation begins as soon as you go aboard the boat at Portland. There is a restful relaxation about a voyage on the water that is missing on a trip by land. The absence of noise and confusion, of dust and smoke, and the sense of peace and tranquility revitalizes tired nerves and brings back to the normal a jaded appetite.

PORTLAND'S WATERFRONT

Dull indeed and lost to all sense of beauty must the person be who fails to enjoy the ride down the majestic and historic Columbia. After leaving the Ash-street dock at Portland the boat takes its way down the Willamette and gives the traveler an excellent idea of the commercial importance of Portland as a seaport. On both sides of the river ocean-going craft are to be seen moored to the docks, loading lumber, wheat, flour, canned salmon and other products of the vast and fertile Columbia River basin for transportation to the Orient or the far-distant isles of the sea. Here too you will notice gangs of longshoremen busy as ants helping to discharge cargoes of coffee, spices, matting, silks, teak wood and mahogany from ships hailing from the lands that border on the other shore of the Pacific. Crowded between two steel-hulled steamers you may chance to see an old-time brig or schooner with its slender and tapering masts, its yard arms, furling sails and apparent confusion of cordage. Its curiously carved figurehead of oak looks out over the harbor with unseeing eyes as though seeking the white-winged companion of by-gone days. Soon your steamer leaves the tree-fringed and tranquil Willamette and enters the sea-seeking Columbia. Near at hand you see Vancouver, one of the oldest military posts in the West, the one-time headquarters of the powerful Hudson Bay



Summer Vacationists Aboard the T. J. Potter



Band Concert at Long Beach



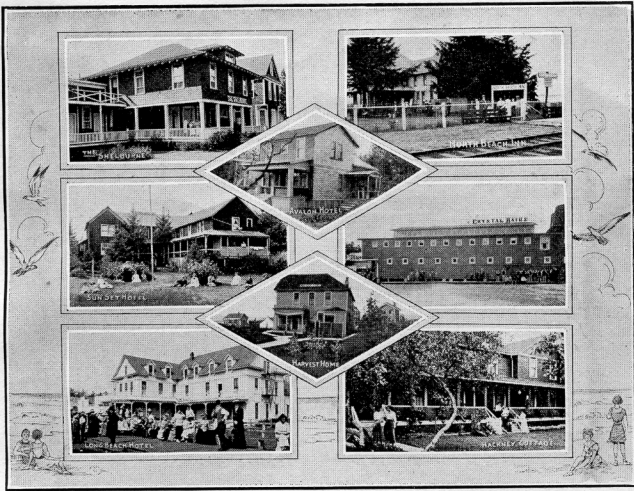
Health and Pleasure by the Sea

company. Here Dr. John McLoughlin, the Chief Factor of the Hudson Bay company, dispensed an almost royal hospitality in the early days. Here too, after the United States took over Fort Vancouver, many young officers destined to become famous during the days of stress and turmoil and fratricidal conflict of the Civil War had their first military experience. When U. S. Grant was stationed at Fort Vancouver in the early fifties his brother officers had not the faintest conception that the day would come when he would be the Commander of a mighty army and later President of the United States.

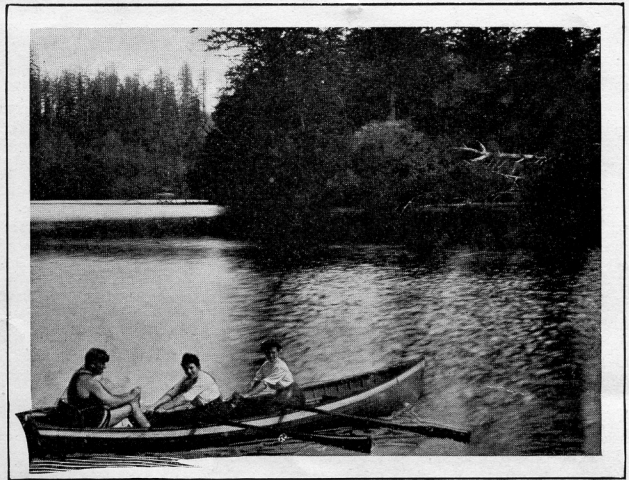
DOWN THE COLUMBIA

As the boat makes its way swiftly and silently down the mighty river of the west there is an ever-changing succession of beauty spots along the shore. If it is contrast and variety that add interest to life you will not lack interest on the journey down the Columbia. As the boat swings in toward the shore you see a group of soft-eyed Jerseys lying in lazy contentment under some wide-spreading oak or cottonwood or standing in the shallow water near the shore and looking up in mild wonder as the waves from the boat ripple against their knees. Here a ledge of rock juts out into the river and from its top a tangled mass of black-berry vines trail down toward the water like a green water-fall. Through the trees you catch enchanting glimpses of green meadows and well kept farms and orchards. Here and there along the shore the calm and unruffled water gives back the imaged reflection of the trees that bend above its surface and the slow-moving clouds look down upon their mirrored images below. Now a vagrant breath of air steals across the calm surface of the water and the tranquil water responds with a myriad of dimpled smiles. The whole trip is one of pleasure and delight.

One feature that adds materially to the pleasure of the traveller is the service aboard the O-W. R. R. & N. boats. Courtesy and consideration for the safety and comfort of the passengers is a strictly enforced rule. The meals are enjoyable because the food is well prepared and excellent in quality and variety. Tongue Point, on the Oregon shore, is one of the points of interest to the



Popular Hostelries Along the Shore



Boating, an Ever-Popular Pastime

LONG BEACH

Long Beach is the metropolis of North Beach. Several good stores, curio shops, moving picture theatres, a skating rink, bowling alley, swimming pool, two bath houses and many excellent hotels, supply the demand of the summer visitors for recreation and amusement. The principal hotels are the Long Beach Hotel, capacity 100 guests, \$1.00 per day and up, special rates by the week; Driftwood Cottage, 100 guests, \$2.00 per day and up, special rates by the week; the Harvest Home, 60 guests, \$1.50 per day, \$9.00 per week and up; the Britt House, 30 guests, \$1.00 per day; the Knapp-Wood, Chamberlains and Clover Cottage.

TIOGA

Tioga is half a mile beyond Long Beach, its postoffice being Long Beach. The Ocean Home Hotel accommodates 25 guests, \$2.00 per day, special rates by the week; and house-keeping rooms may be secured at Thurston Flats at reasonable rates.

BREAKERS

The Breakers Hotel, which accommodates 300 guests, is beautifully situated in the midst of gently rolling grass-covered land waves. Tennis courts and an excellent golf links make this a popular resort particularly when the tennis and golf tournaments are being held. A long distance 'phone and a telegraph line are found in the hotel, putting the business man in instant touch with his office. Rates \$14.00, \$16.00 and \$18.00 per week; special rates for families, societies and large delegations.

OCEAN PARK

Ocean Park has become the all-the-year-round home of many Portland residents. The cottages are built back of a slight rise and most of the houses are located in small groves. The Taylor Hotel has a capacity of 50 guests; \$2.00 per day; special rates by the week.

NAHCOTTA

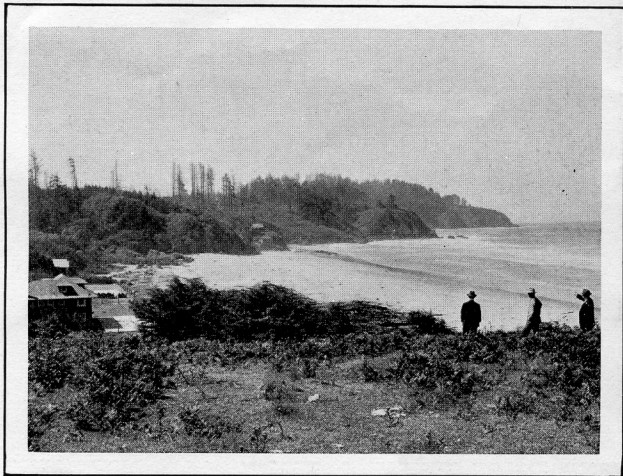
Naheotta is the terminus of the railroad line. It is in daily touch with South Bend and Raymond by boat. It is the shipping point of many of the oyster boats who market their oysters at Portland. There is a new hotel, the Bay View, with a capacity of 50 guests that has just been built. Rates, \$1.50 per day and up; reasonable terms by the week.



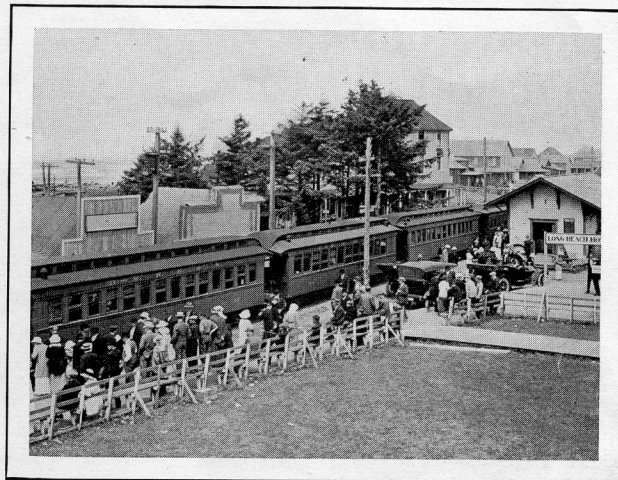
For fares and other information, call on or address
A. C. MARTIN,
 Asst. General Pass. Agent
 Portland, Oregon
H. L. HUDSON,
 Asst. Gen'l. Frt. & Pass. Agent
 Seattle, Washington

WM. McMURRAY,
 General Passenger Agent
 Portland, Oregon

Oregon-Washington Railroad and Navigation Company



Sea and Shore Are Alike Beautiful



Welcoming the New Arrivals

passengers. Here is located the U. S. Supply station for the Light House service. Soon the tree-clad slopes on which Astoria is built come into view. Astoria, the metropolis of the Lower Columbia, has a unique personality. It was founded more than a century ago by John Jacob Astor and is the oldest city in the Pacific Northwest. The stability of Astoria's prosperity is founded on her commerce, her lumber and her salmon. On the Oregon side of the Columbia the annual catch of salmon amounts to 35,000,000 pounds.

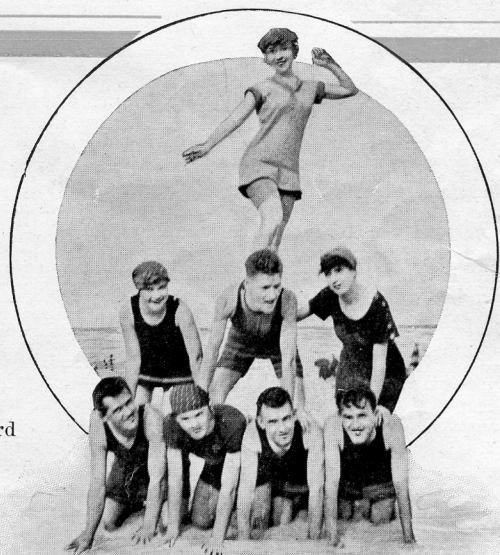
THE TRIP UP NORTH BEACH

The boat crosses the Columbia, five miles wide at this point, and lands its passengers at Megler. Boarding the train here the summer visitors start northward for their destination by the side of old ocean. For some distance the track follows Columbia's shores. The train goes under Scarborough Head by means of a tunnel, and as the train emerges the frowning guns of Fort Columbia are to be seen. Fort Columbia is one of the two Forts that guard the entrance to the Columbia.

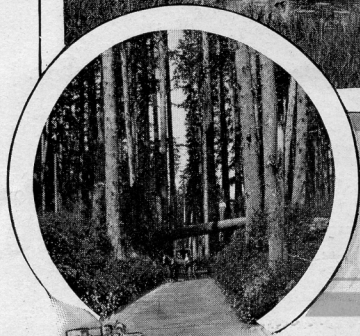
The road traverses a country of dense and luxuriant vegetation. In the lush grass of the meadows on both sides of the track you see numerous herds of sleek, well-fed cows, for we are passing through a famous dairy country. Passing Chinook you soon come to "Cranmoor," the home of H. M. Williams, late of Cape Cod, now the Cranberry King of the West. In all directions you see the smoothly-sanded and well-kept cranberry bogs of Mr. Williams and his fellow cranberry growers.

Fourteen miles from Megler you come to Ilwaco. Ilwaco is situated on a narrow neck of land facing the Columbia. In the foreground is Baker's Bay. A mile away is Cape Disappointment, on the extreme point of which is the Light House. At Ilwaco the train ceases to follow the shore of the Columbia and follows the ocean shore. Shortly after leaving Ilwaco the traveller gets his first view of the Ocean.

Few people realize that we have here in the Northwest something that cannot be duplicated anywhere else. Travellers who have visited the famous beaches of the world say that nowhere else than at North Beach will you find a clear and unbroken stretch of firm white sand stretching for more than twenty miles along the ocean's shore. Nowhere will you find the beach wrinkled with sand waves nor will you find stretches of soft sand. Twice each day it is smoothed out anew by



Playing and Posing on the Beach



Tree-Shaded Roads and Quiet Waters

for here year after year the summer visitors are reaping a crop of health and renewed vigor, of pleasure and happiness and it is a crop that requires no replanting and one that will never be exhausted.

SURF BATHING

North Beach is an ideal beach for surf bathing. The descent to deep water is so gradual that the bathers can wade out for a long distance before getting into deep water. There is an exhilaration about battling with the surf that makes one's blood tingle and the pulses leap. You come out from a plunge in the ocean with an appetite that can do full justice to the clams and crabs and other sea food so abundant at North Beach. One never tires of lying on the sand and watching the curling, whispering waters creep up on the foam-wet shore.

DRIFT WOOD FIRES

One thing which the young people greatly enjoy is a drift-wood fire on the beach. Drift wood is abundant and when the red flames are crackling merrily, lighting up the dancing waves, to recline at ease about the drift-wood fire and tell stories or sing college songs is a pleasure that will long dwell in one's mind.

JAUNTS ALONG SHORE

North Beach is rich in near-by points of interest. The trip to Fort Canby is one of much interest. It stands out on a



Come on in, t

bold promontory that juts out into the ocean and from the Fort a splendid view is to be had of the deep, dark blue, mysterious Pacific.

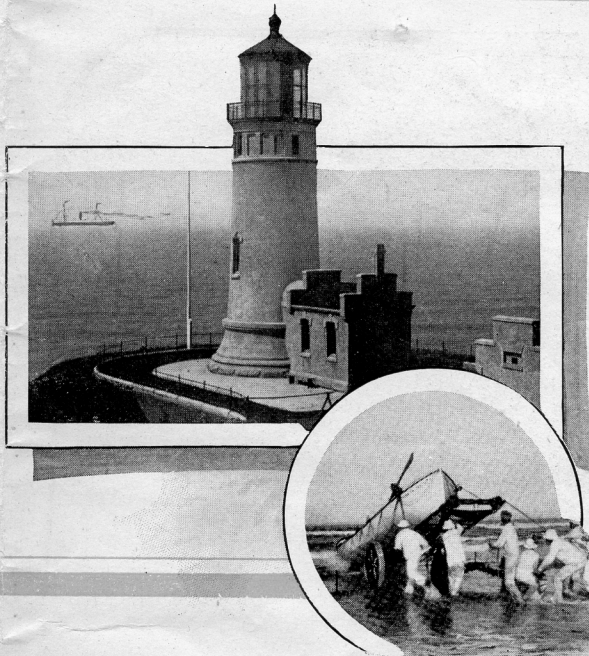
A walk along the shore is never twice the same. There is infinite variety to the sea and the clouds. You can not fail to be interested in the flotsam and jetsam from old ocean cast up on the wet and glistening sand. Water-worn bits of drift wood tell a story of long travel and ceaseless wear from wave and rocky shore. Here you will find a mass of kelp with its balloon-like bulbs and its long, flesh-like streamers. Here, wedged in the crevices of the water-worn rocks, is a bit of delicate sea moss. Rounded pebbles glisten at the water's edge. Shells of many kinds are lying at high tide just beyond the tide's receding reach. A group of circling gulls, Nature's first airships, mark the spot where a fish or a crab has been cast ashore.

INTERESTING SIDE TRIPS

Dead Man's Gulch and the North Head Lighthouse are within easy walking distance of Fort Canby. A good plank walk has been laid through the woods and in many places the over-arching trees form a canopy overhead through which the sunlight makes its way, forming on the walk a carpet of sun and shadow whose design is constantly changing as the boughs above sway gently in the sea breeze. The Natural Arch, Echo Cove, Beard's Hollow and Lovers' Lane are all points of interest. Whether there is a place named Proposal Rock near the exit of Lovers' Lane or not is the question. If there is not there should be, for many a young couple have exchanged their plighted troth while walking through Lovers' Lane. The Life Saving station on Klipsan Beach is well worth visiting. From the Lookout tower a splendid and extensive view is to be had and from this point of vantage you will greatly enjoy watching the Life Saving crew go through their drill. At Nahcotta on Willapa Harbor you may see the clam



the water's fine



North Head Lighthouse
and Life Savers

and crab fishermen bringing their catches for shipment to Portland. Here too the oyster boats land with their succulent cargoes. Splendid boating may be enjoyed on Willapa Harbor and many of the streams emptying into the harbor are good trout streams. During the salmon run daily excursions are made to the seining grounds on the bay and river. Long seines in which there are frequently several tons of salmon are hauled ashore by horses which wade breast high in the river.

ASTORIA

One of the worth while trips is a visit to Astoria. If you have never visited a modern salmon cannery you can put in several hours very pleasantly and profitably going through some one of the extensive and up-to-date canneries located at Astoria. Chinooks, Bluebacks, Steelheads, Silversides and Tules are the varieties handled in the canneries. The visitor to Astoria or North Beach finds a wide variety of sea food from which to choose. In addition to the King of Fish—salmon—he can procure, at low cost, sturgeon, shad, catfish, smelt, ling cod, rock cod, herring, black bass, flounder, perch, sole, halibut, tom cod, crabs, clams, mussels and oysters, not to mention the many varieties of firm-meated and gamey trout to be found in the numerous streams in the district about the mouth of the Columbia.

Do not leave Astoria without climbing Coxeomb Hill. The view from its summit is an inspiration and delight. To the westward is the mouth of the Columbia river, with its line of white water marking the Columbia bar, while to the far horizon the eye sweeps the blue-green sea. A ribbon of smoke is visible where some vessel is inward bound, while a smudge of smoke on the skyline from a steamer hull down in the distance, marks the departure of a lumber carrier en route to China or the Philippines. The mouth of the river is dotted with salmon boats, for the salmon fleet is out on the seining ground. A few years ago the evening sun glinted from several

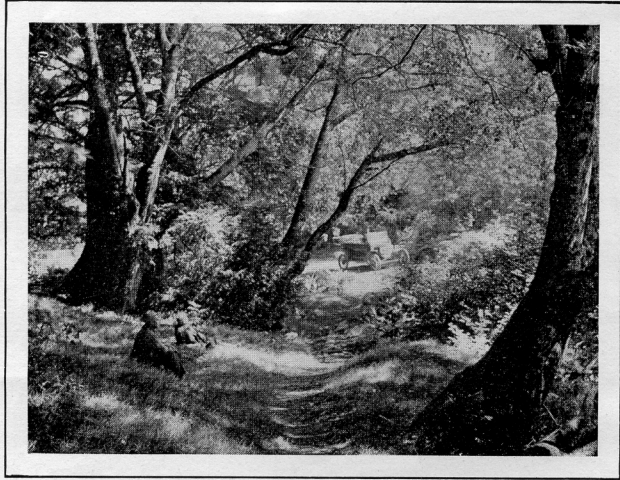
thousand sails of the salmon fleet, but today to see a sail is the exception. The boats depend on gasoline rather than wind nowadays and while the motor boats may not seem so romantic they are much more reliable. Several thousand boats are in use during the salmon season. In the distance may be seen the evergreen clad slopes of Saddle Mountain and Tillamook Head. Across the land like a network of veins and arteries the rivers and streams and inlets are seen. The view is one of such beauty that one feels well repaid for the climb.

A MATCHLESS SPEEDWAY

North Beach offers unparalleled opportunities to those who own automobiles to enjoy the exhilaration of a spin along shore. The beach varies in width from two hundred to three hundred feet and wonderful speed may be made on its smooth surface. To those who prefer scenery to speed the beach also offers much of pleasure. Here and there are to be seen the sand-covered hulls or the broken timbers of vessels that have found their last port on the sands of North Beach.

FISHING AND CLAM DIGGING

If you are an early riser you can generally see at daylight an eager throng of fishermen setting out with throw lines or long bamboo poles for the fishing rocks. The "Fishing Rocks" are on the south end of the beach and when the tide is right a good string of fish can usually be caught. You will also see at low tide an equally eager throng out with shovels and pails digging clams while others armed with rake and gunnysack are out on the rocks raking up crabs that have taken refuge in deep holes in the rocks and are awaiting the coming in of the tide to get back into deep water.



A Beauty Spot in the Woods



Some of North Beach's Famous Hotels

RESORTS AND HOTELS

ILWACO

Ilwaco is a progressive and growing town on Bakers Bay near the mouth of the Columbia. The growth of the town is due to many causes, the principal ones being the summer tourist business, dairying, fishing, logging, stock raising and general farming. There are two hotels, the Gilson with accommodations for 25 guests at \$1.00 per day and up; and the Sprague, which can care for ten guests, \$2.00 per day.



Fishing From the Rocks

SEAVIEW

Seaview, a mile beyond Ilwaco, is noted for the gayety of its social life during the summer season. Many well-to-do Portlanders have established summer homes here. Not only is there a splendid beach at Seaview, but the presence of extensive natural groves forms a natural shelter and wind-brake from the ocean breeze. The Hackney Cottage with a capacity for 60 guests is located here. Rates, \$2.00 per day; special terms by the week.

SHELBURNE

Shelburne is a quarter of a mile beyond Seaview. Mail for Shelburne comes to Seaview Postoffice. The Shelburne Hotel accommodates 130 guests, \$2.00 per day; special rates by the week or month. It is located in a grove of evergreens and is surrounded by many pretty cottages, the homes of summer residents.

BEACH CENTER

Beach Center is less than a half mile on up the beach from Shelburne. The Hotel Sunset, with a capacity for 75 guests, and the Avalon, 30 guests, are located here. Both of these hotels are located on slight elevations giving a splendid view of the Ocean. Their rates are \$2.00 per day; special terms by the week. Beach Center has its mail addressed to Long Beach.

NEWTON

Newton is midway between Beach Center and Long Beach, being just half a mile from each of these summer resorts. Its postoffice is Long Beach. There are two hotels here, the North Beach Inn, 100 guests, \$2.00 per day and up, special rates by the week; and the Ocean View, 20 guests, \$2.00 per day, \$9.00 per week.